

Wood Slats

Interior

On interior applications we use all clear red oak. The oak is kiln dried and finished with a clear, moisture resistant satin lacquer that requires little maintenance. A periodic application of a furniture spray wax or a wax-based furniture polish will keep the moisture barrier intact.

Exterior

Our artificial lumber products are made from 100% recycled high density polyethylene (HDPE). It is UV stabilized to prevent fading and is a wonderful alternate to wood. It will not rot in outdoor applications and is resistant to termites. We offer this in six standard colors: cedar, weathered wood, dark grey, sand, cranberry, and spring green.

Ipe´ wood slats are also excellent outdoors. Our ipe´ is 100% clear all-heart grade. It is hard, strong, dense, and durable, with a 25-year warranty. We apply a red cedar deck sealer before shipping. This will maintain a rich, natural reddish-brown color. It should be renewed every year or two.

Laminated Maple

Intended for indoor use only, these units are either finished in a durable lacquer or stained in the required color and then lacquered.

Keeping this wood finish looking beautiful is easy. Simply clean and polish with any good quality liquid or paste wax polish to provide better protection from dust and smudges. This finish may be wiped clean using a soft damp cloth and a mild soap. Rinse the surface with clean water and dry with a soft cloth.

Steel

All steel is e-coated with a rust inhibitive coating. It is then finished with polyester powder coat for maximum resistance to chipping, peeling, and fading. Color sheet C-6 shows our 25 standard powder coat colors and 5 wrinkle finish colors. Over 150 others are available for a small upcharge. It is also possible to match special colors.

Stainless Steel

Our products are made from high quality type 304 stainless steel which is extremely rust-resistant. All visible surfaces are finished to a #4 brushed finish.

Surfaces can be cleaned with a liquid or spray stainless steel cleaner. A cloth or brush with a mild detergent can also be used. Do not use a metallic or abrasive sponge or brush.

Polyethylene

Parts are roto-molded into a one-piece seamless product using a durable space age polymer material. The color and ultraviolet protection are molded throughout the material allowing it to be subjected to extreme treatment without showing cosmetic defects.

Fiberglass

Our fiberglass furniture is molded of multiple laminations of glass fiber impregnated with polyester thermosetting resin to the proper thickness and strength for the given part. Nominal thickness is 1/8". When necessary structurally, we brace. Everything is made of the thickness necessary for structural integrity.

The standard finish is smooth semi-gloss. A rough stone finish is available in all fiberglass colors, and is suitable for outdoors. RPI offers a wide range of 25 standard colors. Custom color matching is available for an additional charge.

Our 25 flame spread fire retardant resin is ASTM rated for Class 1 (E-84), and is supplied only when the customer specifies it.

To maintain the lustrous, semi-gloss finish, periodically clean using a sponge or soft cloth with warm water and a mildly abrasive product, and apply a light coat of wax. When exposed to the sun outdoors, chalking may appear over time. Use heavy duty buffing compound to remove this and re-wax.

Concrete

Concrete is cast, usually in a color, and reinforced with steel bar. Cured concrete shall attain minimum compressive strength of 3500 p.s.i. at 28 days. Air content shall be from 4% to 6%. The color is integral; the surface is a light sandblast finish. All concrete is coated with a non-glossy sealer which makes it easier to clean and enhances the color.

Anodized Aluminum

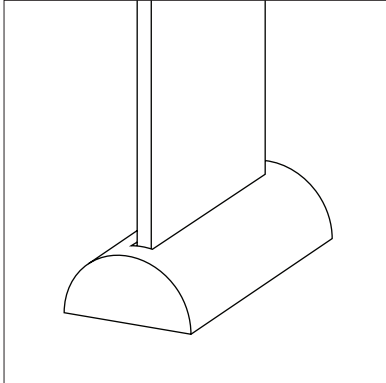
The spun aluminum bowls, funnels, sand pans, protector plates, waste collars, and rain caps used on many of our ash urns and ash/trash receptacles are hard coat anodized in a dark grey color. This finish is very durable, scratch resistant, not harmed by hot cigarettes, and non-fading in sunlight.

Mounting

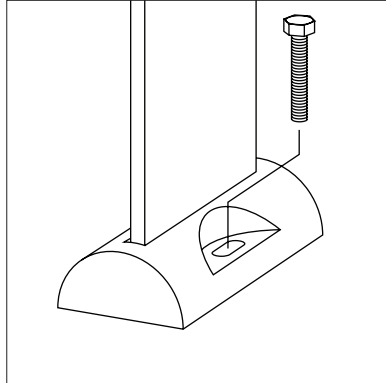


Furnishings
for
Public
Spaces

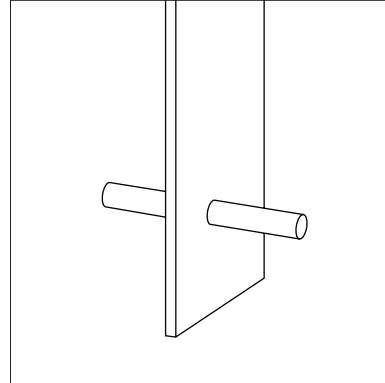
Our benches and waste receptacles can be freestanding, wall mounted, or bolted to the ground in several different ways. See individual product sheets for more detail. Typical ground support details:



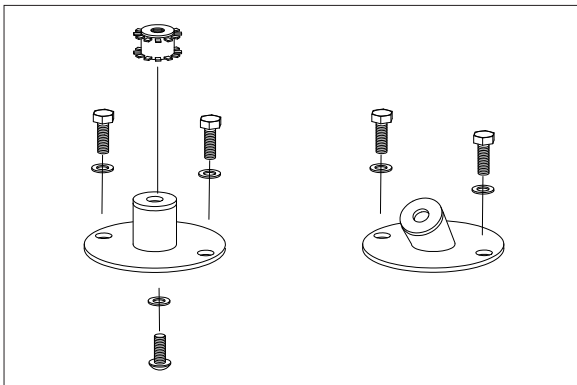
Rubber Foot



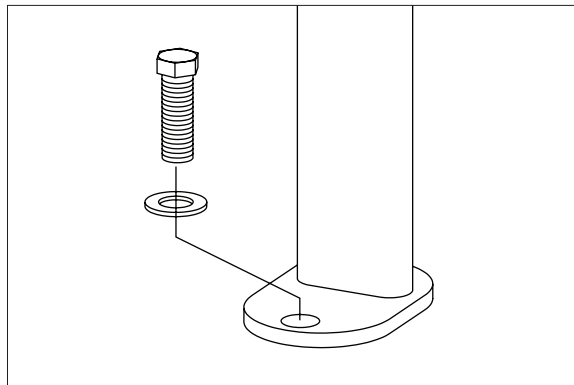
Secured Cast Steel Foot
Predrilled 1/4" diameter hole



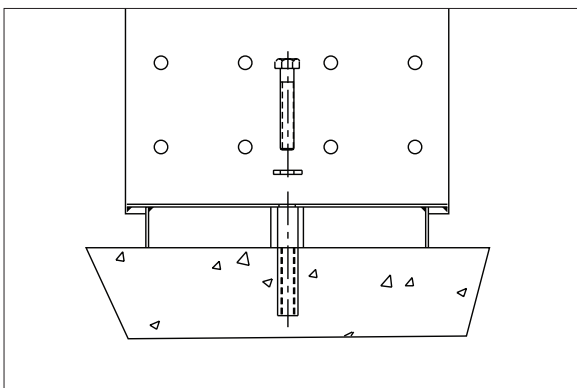
Embedded Concrete Mount



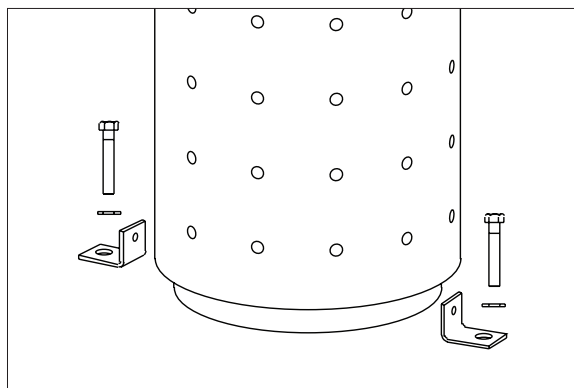
Endure B322 Bench Mount
Predrilled 3/8" diameter holes



Windermere B410 Bench and R410 Waster Mount
Predrilled 5/8" diameter holes



Bolt Through
Predrilled 5/8" diameter hole



L-Strap
Predrilled 5/8" diameter holes