

Endure

Planter



PSLR-2720-WP

RPI *Furnishings for Public Spaces*



Endure Planter

Furnishings
for
Public
Spaces

Poly slat planters from the Endure Collection feature artificial lumber slats made from 100% recycled high-density polyethylene (HDPE). As a wonderful alternative to wood, the material is suited to both outdoor and indoor use. It is UV-stabilized to prevent fading, will not rot, is resistant to termites, and is virtually maintenance-free.

The unique racetrack-shaped slats, which measure 1.2" x 2.5", are attached to the frame of the planter with stainless steel hardware. The supporting frame is constructed of 12-gauge steel. All steel is e-coated and black powder coated for outdoor use. A rigid, black polyethylene liner is included with all units. Black rubber trim is used on the base ring to protect floors from damage.

Tops are available in three materials: charcoal-colored polyethylene, dark grey anodized aluminum, or fiberglass which is available in a variety of colors. Slats are available in six colors: sand, cranberry, spring green, cedar, dark grey, and weathered wood.

To specify:
Indicate model number, size, top material, and color of slats.

To specify color:
If top material is fiberglass, indicate color from color page C-8.

Options:

- Fire retardant resin for fiberglass tops
- Aluminum anchor straps or bolt through bottom

Poly Slat Colors



Sand



Cranberry



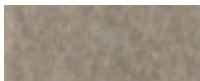
Spring Green



Cedar



Dark Grey



Weathered Wood

Model	Overall Size	Top Material	Liner I.D. Rim	Approx. Weight
PSLR-2720-WP	22" dia x 20" high	Polyethylene	18"	50 lbs
PSLR-2720-AL	22" dia x 20" high	Aluminum	18"	50 lbs
PSLR-2720-FG	22" dia x 20" high	Fiberglass	18"	50 lbs
PSLR-2720-NT	22" dia x 18.5" high	(No Top)	18"	50 lbs
PSLR-2714-WP	22" dia x 14" high	Polyethylene	18"	39 lbs
PSLR-2714-AL	22" dia x 14" high	Aluminum	18"	39 lbs
PSLR-2714-FG	22" dia x 14" high	Fiberglass	18"	39 lbs
PSLR-2714-NT	22" dia x 12.5" high	(No Top)	18"	39 lbs



PSLR-2720-WP



PSLR-2714-WP

Companion Products



B322 B-72 bench and SLR-27B-AL



SLR-27B-AL waste receptacle