

B318-1-STF-60

B318-UF-60

B318-FF-60



Furnishings
for
Public
Spaces

B318 Series

Steel, Fiberglass, Wood and Upholstery Seating

These benches are an attractive addition to almost any setting. The steel seats are 12-gauge perforated steel with 1/2" diameter holes spaced 6" apart. The grooved fiberglass seats have 1/8" wide grooves spaced 2" apart. The slats on the wood benches are 1.5" wide x 3" deep. For indoor use, we use red oak with a clear, moisture-resistant satin lacquer finish. For outdoor use, redwood is finished with a penetrating oil to enhance the color of the wood.

The pedestals can be ordered in fiberglass or concrete. A light sandblast finish is standard on the concrete pedestals. Optional black steel arms, 3/8" x 3" wide, are available on the B318-1 and B318-3 wood slat models. L-shaped aluminum anchor straps are standard on the B318-5 models. Other lengths than those below are available on special order, six bench minimum.

To specify material:
Seats: Perforated steel, grooved fiberglass, red oak or redwood slats, or upholstered

Upholstery is customer's own material. B318-U requires 60" or 72" of material at least 54" wide. Yardage is based on non-patterned fabric.

Pedestals:
Fiberglass or concrete

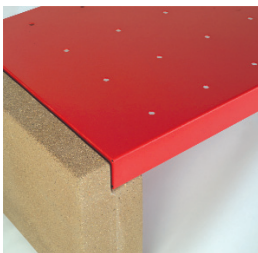
To specify color:
To specify concrete and fiberglass colors, see color page C-8. For steel colors, see color pages C-6 and C-7.

Options:

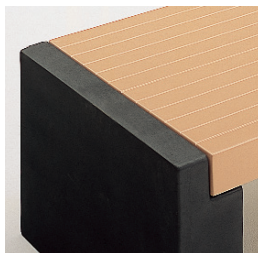
- Steel arms
- Extra weight in fiberglass pedestals
- L-shaped anchor straps (standard on B318-5 models)
- Fire retardant resin for fiberglass seats and pedestals

Specifications	Model	L	D	H	Approx. Weight
Grooved fiberglass seat, fiberglass legs, no back	B318-FF-60	60"	23.5"	16"	55 lbs
Grooved fiberglass seat, concrete legs, no back	B318-FC-60	60"	23.5"	16"	375 lbs
Perforated steel seat, fiberglass legs, no back	B318-1-STF-60	60"	23.5"	16"	65 lbs
Perforated steel seat, concrete legs, no back	B318-1-STC-60	60"	23.5"	16"	370 lbs
Upholstered seat, fiberglass legs, no back	B318-UF-60	60"	23.5"	16"	50 lbs
Upholstered seat, fiberglass legs, no back	B318-UF-72	72"	23.5"	16"	60 lbs
Red oak seat, fiberglass legs, no back	B318-1-ROF-60	60"	23.5"	16"	95 lbs
Red oak seat, concrete legs, no back	B318-1-ROC-60	60"	23.5"	16"	405 lbs
Red oak seat, fiberglass legs, no back	B318-5-ROF-60	60"	11.5"	16"	50 lbs
Red oak seat & back, fiberglass legs	B318-3-ROF-60	60"	23.5"	30"	130 lbs
Red oak seat & back, concrete legs	B318-3-ROC-60	60"	23.5"	30"	435 lbs
Redwood seat, fiberglass legs, no back	B318-1-RWF-60	60"	23.5"	16"	60 lbs
Redwood seat, concrete legs, no back	B318-1-RWC-60	60"	23.5"	16"	370 lbs
Redwood seat, fiberglass legs, no back	B318-5-RWF-60	60"	11.5"	16"	35 lbs
Redwood seat & back, fiberglass legs	B318-3-RWF-60	60"	23.5"	30"	85 lbs
Redwood seat & back, concrete legs	B318-3-RWC-60	60"	23.5"	30"	385 lbs
Recycled poly slat seat, fiberglass legs, no back	B318-1-ALF-60	60"	23.5"	16"	90 lbs
Recycled poly slat seat, concrete legs, no back	B318-1-ALC-60	60"	23.5"	16"	400 lbs

Details



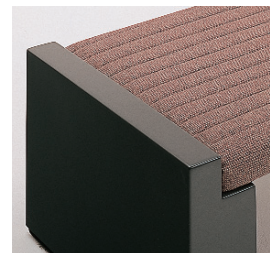
B318-1-STC-60



B318-FF-60



B318-1-ROF-60



B318-UF-60



Furnishings
for
Public
Spaces



B318-1-STC-60 steel seat with concrete pedestals



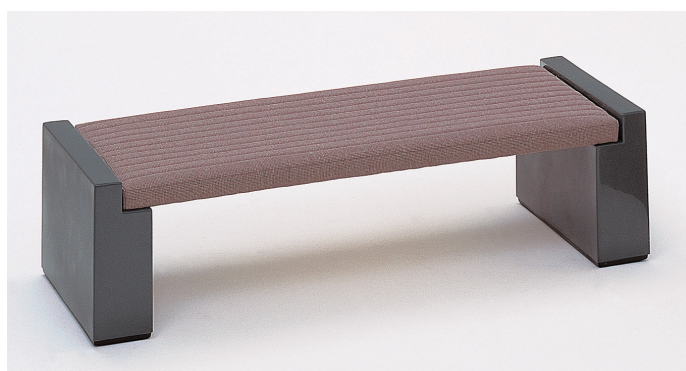
B318-1-STF-60 steel seat with fiberglass pedestals



B318-FF-60 grooved fiberglass seat with fiberglass pedestals



B318-UF-60 upholstered seat with fiberglass pedestals



B318-UF-60 upholstered seat with fiberglass pedestals

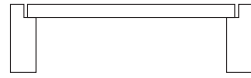


B318-1-ALF-60 poly slat seat with fiberglass pedestals

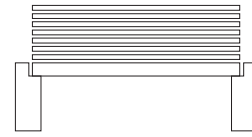


B318 wood slat seat and back with fiberglass pedestals

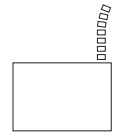
Relative Sizes



B318, B318-1, B318-5



B318-3



Bench B318, with or without back,
may be used in multiples

