



B320 B-S

B320 A-SC-6024

B320 H-F



B320 Series

Furnishings
for
Public
Spaces

The B320 bench line is designed for use in public areas - shopping malls, airports, lobbies, etc. The seats are available in fiberglass or perforated steel. The supports are available in steel or concrete. The units are available free-standing or hanging.

Steel

All steel parts are powder coated in a polyester based formulation with excellent light and weathering resistance. When used outdoors an undercoating should be considered. All mounting holes for the hanging benches are predrilled. The four 5/8" holes provided are intended for 1/2" dia. fasteners. All mounting hardware is supplied by the customer. All support pedestals are 3/8" thick x 4" wide hot rolled steel. The seats are bolted to the pedestals with non-slag, tamper-resistant Allen button-head cap screws.

Fiberglass

Our fiberglass units are molded of multiple laminations of glass fiber impregnated with polyester thermosetting resin to the proper thickness and strength for the given part. The color is thoroughly integrated in the outer layer of the fiberglass. The use of ultraviolet stabilizers in the manufacturing process makes the fiberglass highly resistant to fading, chipping, and peeling.

Concrete

Our concrete is cast in an integral color and reinforced with steel bar. It has a light sandblast finish and is coated with a protective sealer.

Feet

Injection molded rubber feet are standard on free-standing models to prevent marring floors. Cast steel feet of similar shape are available to enable the benches to be bolted to the floor or L-shaped anchor straps can be specified.

To specify material:
Steel or fiberglass seat with steel or concrete supports.

To specify color:
For steel and concrete colors, see color page C-6. For fiberglass colors, see color page C-8.

To specify style:
Free-standing or hanging, with or without back.

Options:

- Cast steel anchor feet or L-shaped anchor straps for steel pedestals.
- Steel arms (see Bench Arms & Tables bulletin)

Specifications	Model	L	D	H	Approx. Weight
Steel seat & pedestals; no back	B320 A-S-2418	24"	18"	15.75"	52 lbs
Steel seat & pedestals; no back	B320 A-S-6018	60"	18"	15.75"	77 lbs
Steel seat & pedestals; no back	B320 A-S-7218	72"	18"	15.75"	83 lbs
Steel seat & pedestals; no back	B320 A-S-2424	24"	24"	15.75"	60 lbs
Steel seat & pedestals; no back	B320 A-S-6024	60"	24"	15.75"	85 lbs
Steel seat & pedestals; no back	B320 A-S-7224	72"	24"	15.75"	92 lbs
Steel seat & concrete pedestals; no back	B320 A-SC-2418	30"	18"	15.75"	237 lbs
Steel seat & concrete pedestals; no back	B320 A-SC-6018	66"	18"	15.75"	255 lbs
Steel seat & concrete pedestals; no back	B320 A-SC-7218	78"	18"	15.75"	261 lbs
Steel seat & concrete pedestals; no back	B320 A-SC-2424	30"	24"	15.75"	318 lbs
Steel seat & concrete pedestals; no back	B320 A-SC-6024	66"	24"	15.75"	340 lbs
Steel seat & concrete pedestals; no back	B320 A-SC-7224	78"	24"	15.75"	348 lbs
Fiberglass seat & back; steel pedestals	B320 B-F	60"	28.5"	29"	120 lbs
Steel seat & back; steel pedestals	B320 B-S	60"	28.5"	29"	150 lbs
Steel seat & back; steel pedestals	B320 B-S (26)	26"	28.5"	29"	100 lbs
Hanging fiberglass seat & back	B320 H-F	60"	27.5"		120 lbs
Hanging steel seat & back	B320 H-S	60"	27.5"		140 lbs
Hanging steel seat; no back	B320 AH-S-2418	24"	*18"		62 lbs
Hanging steel seat; no back	B320 AH-S-6018	60"	*18"		80 lbs

* These extend an additional 1.5" out from the wall.



B320 A-SC-6024 steel seat; concrete pedestals



B320 B-S (26) steel seat, back and pedestals



B320 A-S-6024 steel seat and pedestals



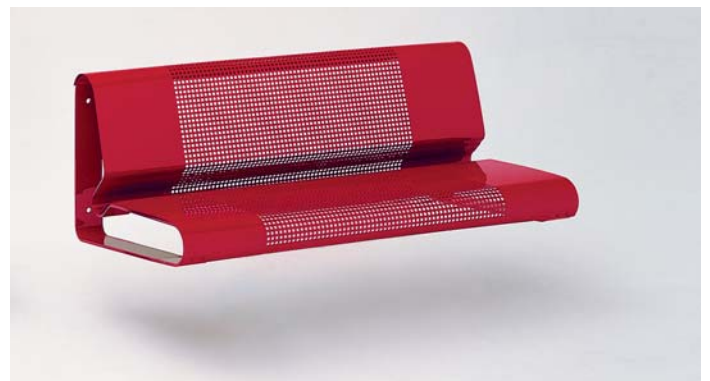
B320 B-F fiberglass seat and back; steel pedestals



B320 AH-S-6018 hanging steel seat



B320 B-S steel seat, back and pedestals



B320 H-S steel hanging seat and back

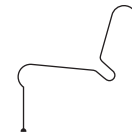
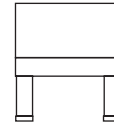
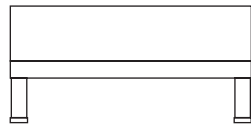


Furnishings
for
Public
Spaces

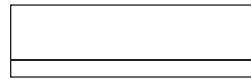
Relative Sizes



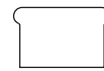
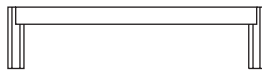
B320 A



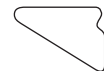
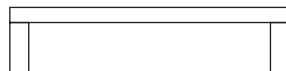
B320 B



B320 H



B320 A-SC



B320 AH