





The perfect balance of form and function, Endure re-defines the basic bench and establishes a new standard in a highly competitive arena. Shown to the left are the PSLR-2720-WP planter, B322 B-72 bench and the SLR-27B-AL waste receptacle. Shown below are the B322 B-44 bench and the SLR-22-W waste receptacle.

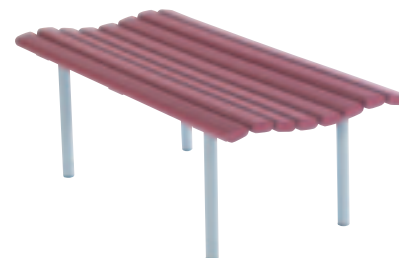


## Endure

The Endure Collection provides an environmentally friendly solution to any installation. Comprised of a clean streamlined design, this Collection has been created with 100% recycled polyethylene lumber slats. A key design element, the recycled slats offer the warm aesthetic of natural wood with a lifetime of maintenance free satisfaction.

Refreshingly subtle the Endure Collection provides a strong and reliable performance in any season. Robust in its offering the Collection includes benches, waste receptacles, and planters.

Pictured on the cover is the B322 B-72 bench with the SLR-27B-AL waste receptacle. In the background is the B322 A-72 bench with the PSLR-2720-WP planter.



Shown above are the PSLR-2720-WP with legs and PSLR-2714-WP with base ring planters and the B322 A-72 bench.

RPI offers many color combinations, including 6 poly slat finishes and 30 powder coat finishes, providing clients with a wide range

of color combinations. Shown below are the SLS-27A-WVP waste receptacle and the B322 A-72 bench.






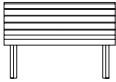


# Endure Bench

Furnishings  
for  
Public  
Spaces

The Endure bench with matching waste receptacles and planters feature artificial lumber slats comprised from 100% recycled high-density polyethylene. A wonderful alternative to wood, the material is ideally suited to both outdoor and indoor use. It is UV stabilized to prevent fading, will not rot in outdoor applications, and is resistant to termites. The unique racetrack-shaped slats, which measure 1.2" x 2.5", are attached to the frame of the bench with stainless steel hardware. Slats are available in six colors: sand, cranberry, spring green, cedar, dark grey, and weathered wood.

For comfort, the slats on the bench with back curl down in front and the backless unit has the distinctive RPI wave shape. The bench frame is made of 1.25" diameter, 14-gauge steel tube. All steel is e-coated and powder coated for outdoor use. Black polyethylene glides protect floors from damage. Anchor mounts are available with two 3/8" diameter holes suitable for your 5/16" diameter bolts. Matching Endure Waste Receptacles and Planters complete the collection.

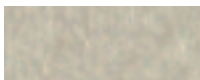
Specifications		Model	L	D	H	Approx. Weight	BIFMA Certified
	Poly slat seat, steel legs, no back	B322 A-44	44"	21"	16"	47 lbs	✓
	Poly slat seat, steel legs, no back	B322 A-72	72"	21"	16"	71 lbs	✓
	Poly slat seat & back, steel legs	B322 B-44	44"	28"	30.5"	70 lbs	✓
	Poly slat seat & back, steel legs	B322 B-72	72"	28"	30.5"	110 lbs	✓

**To specify:**  
Slat color and steel frame color

**To specify steel color:**  
See color pages C-6 and C-7

**Options:**  
Anchor mount

### Poly Slat Colors



Sand



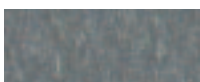
Cranberry



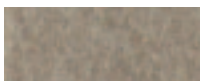
Spring Green



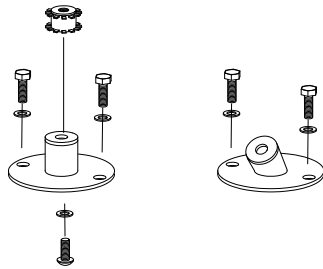
Cedar



Dark Grey



Weathered Wood



Anchor mount



B322 A-72

### Companion Products



PSLR-2720-WP planter



SLR-27B-AL waste receptacle

Designed by ECCO Design.  
Manufactured and assembled  
in the USA.