

STX Stainless Steel

Waste
Receptacle



STX Stainless Steel

Stainless Steel is one of the finest materials available for the manufacturing of waste receptacles worldwide. It provides many opportunities for aesthetic touches in addition to being easy to maintain.

STX stainless steel waste receptacles are part of the RPI Wave Collection, which includes stainless steel Wave benches and planters. We offer stainless steel waste receptacles in many body sizes and with tops made of various materials and designs to satisfy almost any need.

Uses are almost infinite – shopping malls, educational institutions, airports, public spaces and health care.



Elegant, durable and virtually maintenance-free, the STX stainless steel receptacle is an excellent choice for recycling in public spaces.

Shown above are the STX-27B-FG-SS with optional etched recycle symbol, STX-27A-AL-SS and B321 B-SS-7222-SS.



Precision laser cut or etched logos may be specified to identify a university or corporation.



Pictured on the cover is the STX-22-W-SS unperforated (optional). Shown to the right is the STX-27B-AL-SS with optional etched logo.



Shown to the left is the STX-22-W-SS unperforated (optional). Shown above is the aluminum rain cap option.

If you require a waste receptacle design not shown, please call our office to discuss our "Customs" program.

Manufacturing in the USA gives us the flexibility to accommodate special waster designs to meet your specific requirements.



STX Stainless Steel Waste Receptacle

Furnishings
for
Public
Spaces

STX stainless steel waste receptacles are part of the Wave Collection, which includes our stainless steel Wave benches and stainless steel planters.

Units are constructed of 18 gauge type 304 stainless steel with #4 brushed finish. Black rubber trim is provided on the bottom edge to protect floors from damage. An internal bag ring is supplied to support a trash bag unless an optional rigid liner is specified. The bag is draped over the ring itself. In this way the bag need not hang outside, and the use of a rigid liner is not required. Rigid polyethylene liners with hand holes are available as an option, but reduce capacity to 42, 28.3, 16.6 and 7.7 gallons respectively. Tops are available in three materials: dark grey anodized aluminum, charcoal-colored polyethylene, or fiberglass which is available in a variety of colors. STX-11 and STX-22 models are available without perforations if specified.

Specifications	Model	Overall Size	Opening	Top Material	Capacity w/o Liner	Approx. Weight w/o Liner
Style A Large opening top	STX-27A-AL-SS	21" dia x 30.5" h	16.5" dia	Aluminum	39 gallons	52 lbs
	STX-22-W-SS	15" dia x 33" h	11" dia	Aluminum	22 gallons	34 lbs
	STX-11-W-SS	12" dia x 26" h	9" dia	Aluminum	11 gallons	24 lbs
	STX-41A-FG-SS	24" dia x 33" h	18.5" dia	Fiberglass	56 gallons	66 lbs
	STX-27A-FG-SS	21" dia x 30.5" h	16.5" dia	Fiberglass	39 gallons	52 lbs
	STX-22-WFG-SS	15" dia x 33" h	11" dia	Fiberglass	22 gallons	34 lbs
Style B Dome top with smaller opening	STX-27A-WP-SS	21" dia x 30.5" h	16.5" dia	Polyethylene	39 gallons	52 lbs
	STX-22-WP-SS	15" dia x 33" h	11" dia	Polyethylene	22 gallons	34 lbs
Waste/Ash	STX-41B-AL-SS	24" dia x 35" h	9.375" dia	Aluminum	56 gallons	66 lbs
	STX-27B-AL-SS	21" dia x 32" h	8.375" dia	Aluminum	39 gallons	52 lbs
	STX-41B-FG-SS	24" dia x 35" h	9.375" dia	Fiberglass	56 gallons	66 lbs
	STX-27B-FG-SS	21" dia x 32" h	8.375" dia	Fiberglass	39 gallons	52 lbs
Side Load Top	STX-41-WA-SS	24" dia x 33.5" h	12" dia	Aluminum	56 gallons	66 lbs
	STX-27-WA-SS	21" dia x 31.25" h	10" dia	Aluminum	39 gallons	52 lbs
	STX-22-WA-SS	15" dia x 33" h	7" dia	Aluminum	22 gallons	34 lbs
Ash w/bowl	STX-41SL-FG-SS	24" dia x 42.25" h	13.75" oval x 6.75" h	Fiberglass	56 gallons	66 lbs
	STX-27SL-FG-SS	21" dia x 39.5" h	11.5" oval x 6.25" h	Fiberglass	39 gallons	52 lbs
	STX-22SL-FG-SS	15" dia x 41" h	7.75" oval x 5.25" h	Fiberglass	22 gallons	34 lbs
Ash w/funnel	STX-11-A-SS	12" dia x 26" h	n/a	Aluminum	n/a	24 lbs
	STX-11-F-SS	12" dia x 26" h	n/a	Aluminum	n/a	24 lbs

To specify:

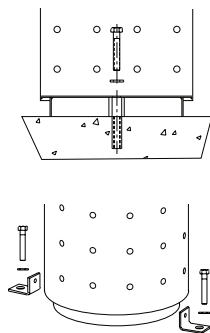
Indicate model no., top style, color and material.

To specify color:

If fiberglass top is specified, indicate smooth semi-gloss finish or rough stone finish. For fiberglass colors, see color page C-8.

Options:

- Fire retardant resin for fiberglass tops
- Polyethylene liners
- Chain to attach top to body
- Bolt through bottom or use aluminum anchor straps
- Rain cap available on most models



Bolt through bottom or aluminum anchor straps are available. RPI supplies a 5/8" diameter hole in bottom and a 1.5" high spacer. Attached anchor straps have a 5/8" diameter hole. Customer supplies hardware.

Companion Products



B321 B-SS-7222-SS



PSR-2719-WP-SS